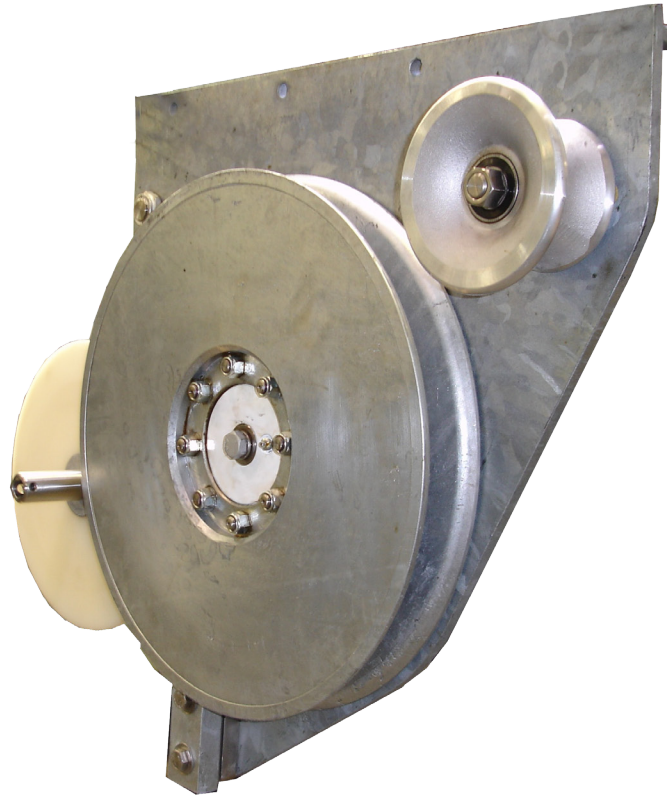
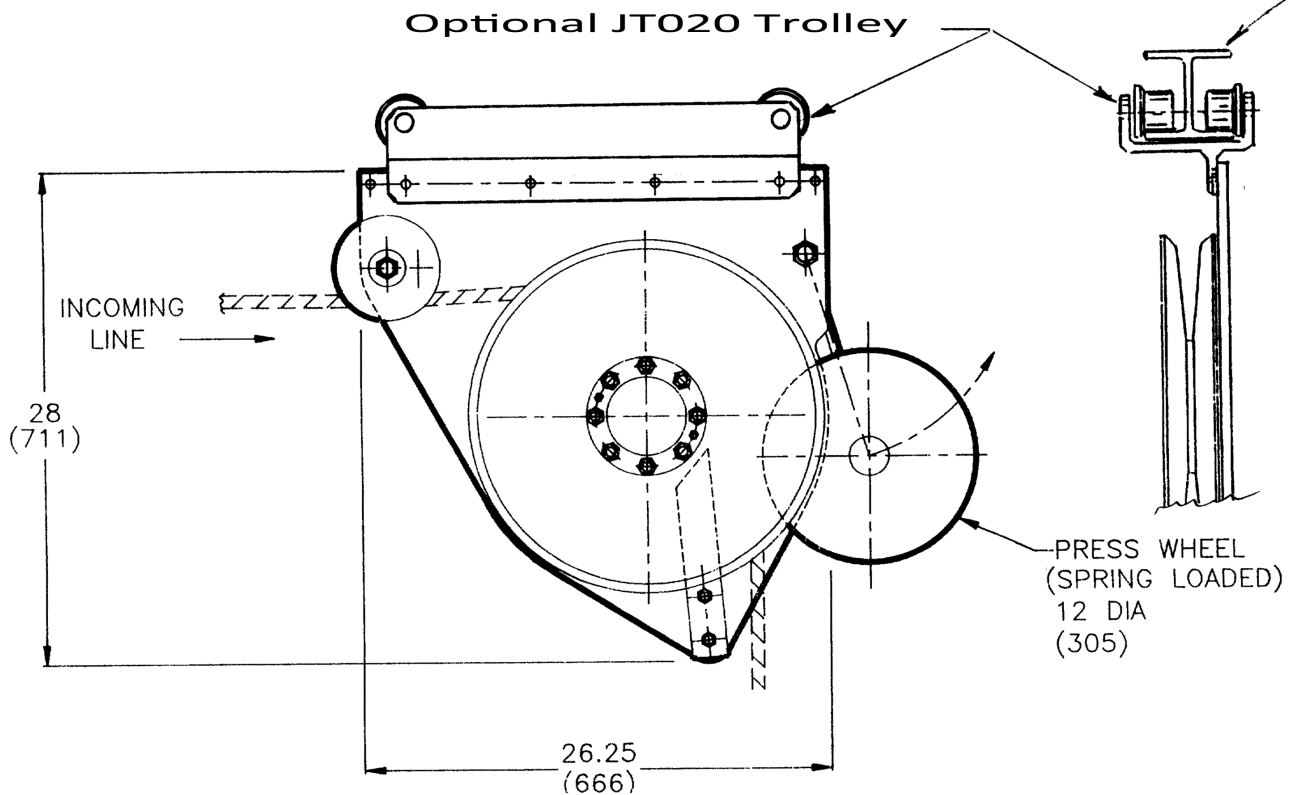
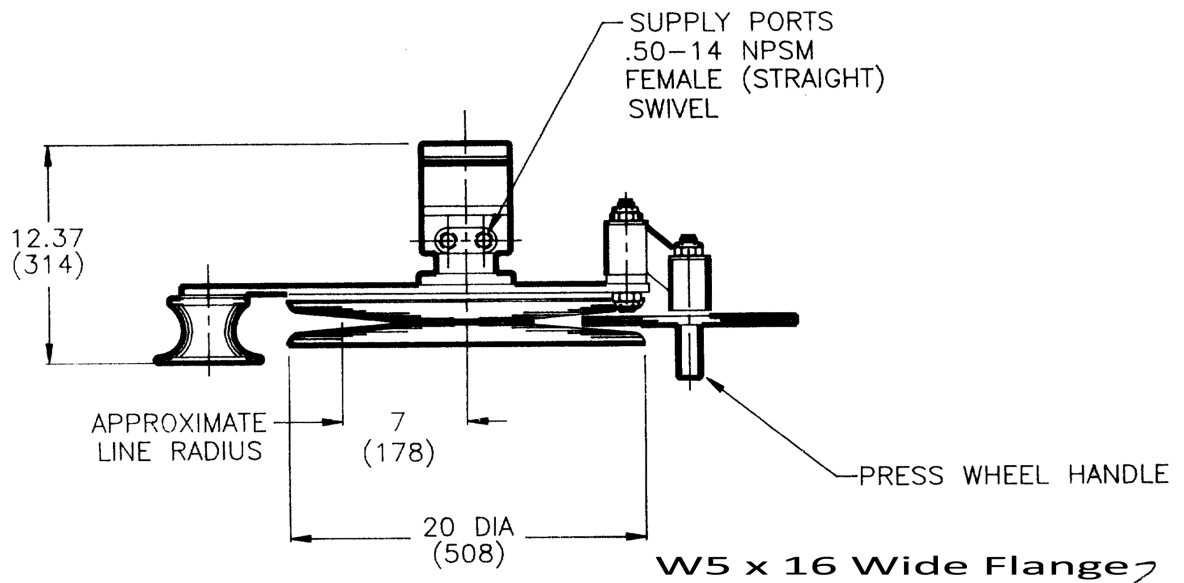




J2020 LINE BIN COILER



Performance:	90 Lbs pull at 500 Feet per minute, based on 7 GPM at 400 PSI
Maximum Oil Supply:	20 GPM at 1000 PSI
Construction:	Frame Galvanized Steel
	Sheaves: Galvanized Steel
	Idler Sheaves: Aluminum
	Press Wheel: Nylon
Line Size:	5/8" to 1 1/2" diameter
Weight:	285 LBS



4259 22nd Ave. W. Seattle, WA 98199
 Phone: (206) 285-3200 Fax: (206) 282-8520
 sales@marcoglobal.com
 www.marcoglobal.com