

PKW20 PURSE WINCH

FEATURES

- ▶ Dual Sheave Design
- ▶ No Slippage
- ▶ Easily Passes Splices and Links
- ▶ Backs up Easily Under Tension
- ▶ Up to 12,000 lbs Line Pull
- ▶ Optional Line Transporter
- ▶ Double Gypsy for Hauling Breastlines
- ▶ For herring or Squid Seiners

The PKW20 Purse Winch features a unique dual sheave design which eliminates slippage when pursing.

The line wraps first around the inside sheave, then comes around the outer sheave for a second wrap which takes the slack and maintains traction on the line in the inside sheave.

The extra traction provided by the outer sheave allows the operator to stop and reverse the winch to safely pay out line under tension.

The dual sheave design also allows splices, knots and even links to pass through the sheaves safely without slippage.

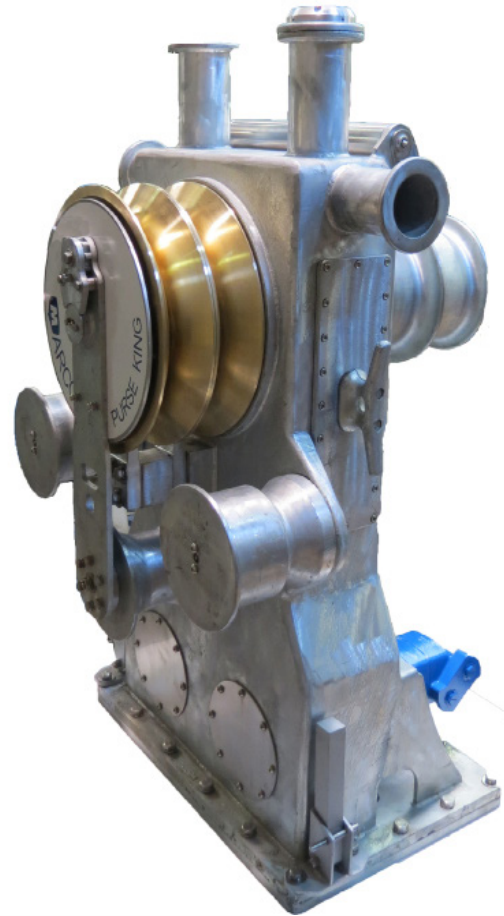
For further safety the PKW20 features an E-STOP emergency shut off switch on the top horn.

The back side of the winch features a 9" dual capstan.

The PKW20 uses dual motors and is available with motor options. Your performance will depend upon the hydraulic flow and pressures your boat can provide.

SAFETY

- ▶ Hands Free Operation
- ▶ E-STOP Emergency Shut Off Switch.

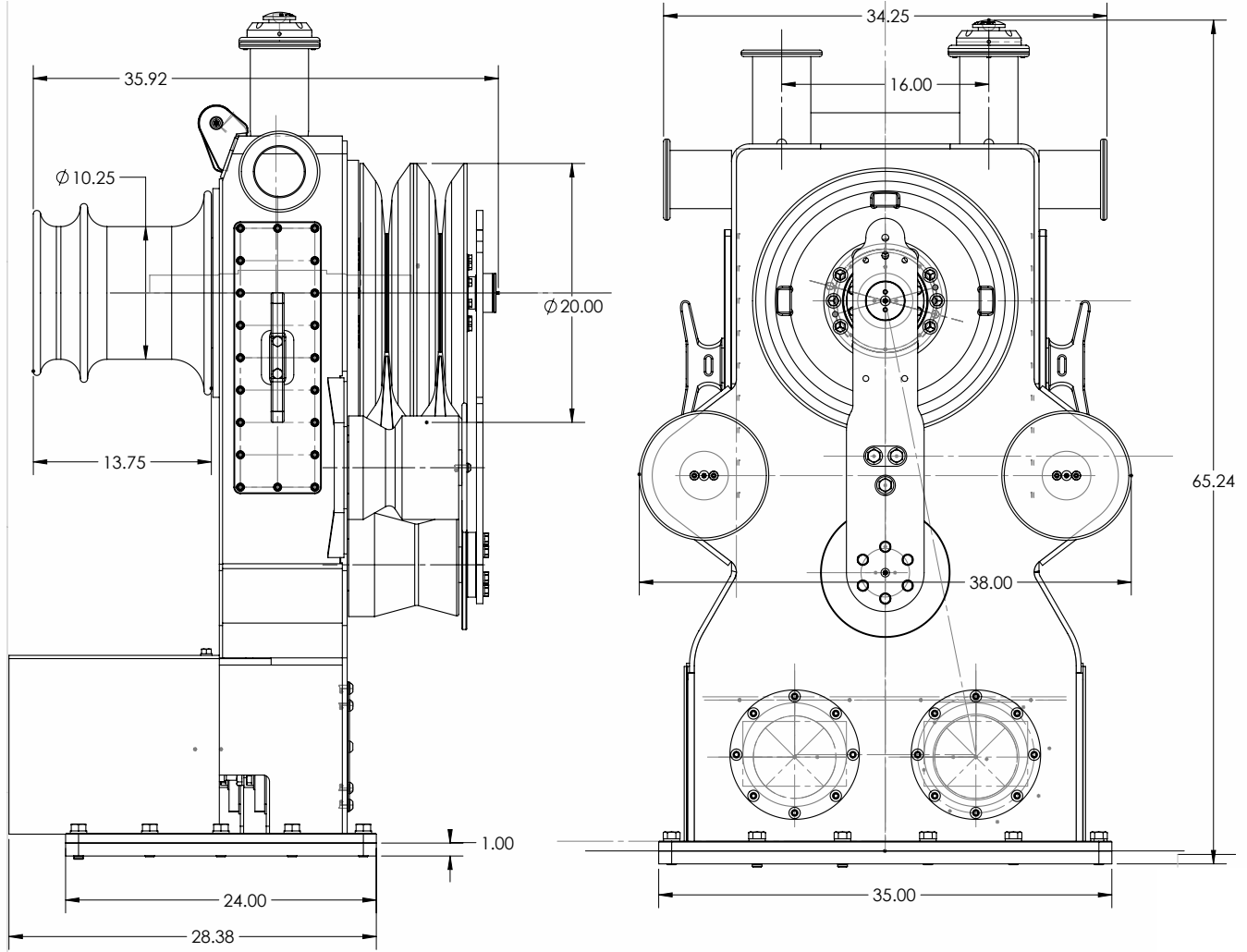


Performance Specifications

Motor	Input Flow	Pull	Line Speed
	GPM	(in Pounds)	Feet Per Minute
2 ea 40 CID Lo-Speed	50	12,000	143
2 ea 40 CID Hi-Speed	50	5,880	283
2 ea 40 CID Lo-Speed	100 COMBINED* (50 to each motor)	12,000	283
*PROPER CIRCUITRY AND VALVES REQUIRED.			
Rating based on readings taken during actual purse seining operations.			



PKW20 PURSE WINCH



Weight: 2,630 lbs

Smith Berger Marine, Inc.

7915 10th Ave. S., Seattle, WA 98108 USA

Tel. 206.764.4650 - Toll Free 888.726.1688 - Fax 206.764.4653

E-mail: sales@smithberger.com - Web: www.smithberger.com